



GS-1500N

Professional Level **Long Range**UAV LiDAR Scanning System GS-1500N

LIDAR

Self Developed
POS

Trajectory
One Key Solution

Camera
(Optional)



Wuhan Geosun Navigation Technology Co.,Ltd

Web: www.geosunlidar.com

Cellphone/WhatsApp: +86 15527360208

Email: sales@geosunlidar.com

Add: 4F, Building D, Maker plaza No.8 West Maodianshan Road, East Lake Hi-tech Zone Wuhan City, China

GS-1500N

Professional Level Long Range UAV LiDAR Scanning System GS-1500N

Highly
Integrated

High
Precision

1500m
Ranging

High
Efficiency

Multi
Platforms

Easy
Operation

GS-1500N LiDAR scanning system is a UAV / vehicle measurement system independently developed by Geosun company. It highly integrates laser scanner, GNSS satellite positioning system, INS inertial navigation system and camera(full frame), and can quickly obtain high-precision laser point cloud number. It can be widely used in Digital city construction, Industry, Land survey, Forestry and Agriculture

System Parameter

Accuracy	10cm@400m
Weight	2.5 kg
Working Temperature	-20° ~ +55°

Dimension	238*102*130mm
Storage	512 GB Solid State Drive Support 128GB TF Card
Carrying Platform	Multi Rotor/VTOL/Vehicle

Laser Unit

Max Range	1500m
Laser Class	1550nm
Laser type	Single line mechanical scanning

FOV	100°
Range Accuracy	5mm@100m
Echo	Five Echo

POS Unit

Update Frequency	200HZ
Pitch /Roll Accuracy	0.003°
Heading Accuracy	0.010°

Position Accuracy	≤0.05m
GNSS Signal Type	GPS L1/L2/L5, GLONASS L1/L2 BDS B1/B2/B3, GAL E1/E5a/E5b

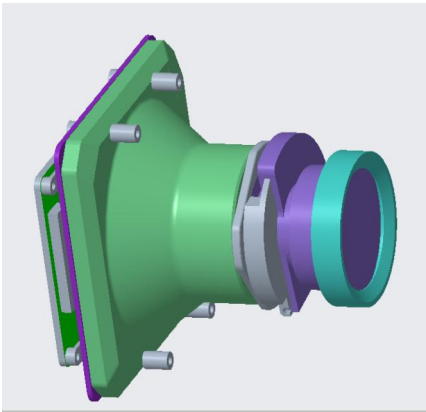
Pre-Processing Software

POS (Trajectory) Software	Shuttle
---------------------------	---------

Point Cloud Software	gAirHawk
----------------------	----------

Camera

FOV	57° or 79°
Effective Pixel	45 MP
Focal Length (mm)	40



Operation Efficiency Table

Flight Height (m)	Density(pts/m²)@10m/s	Single Flight Operation(km²)
200	135	2.8
400	40	5.6

Mission Planning Software (optional)

Mission Planning Software

Customized Route Planning Software — WayPoint Master

Application Case



Model:GS-1500N
Carrying Platform: Manned Aircraft or VTOL Fixed
speed: 20 m/s
Application: Topographic mapping
Project location: China

